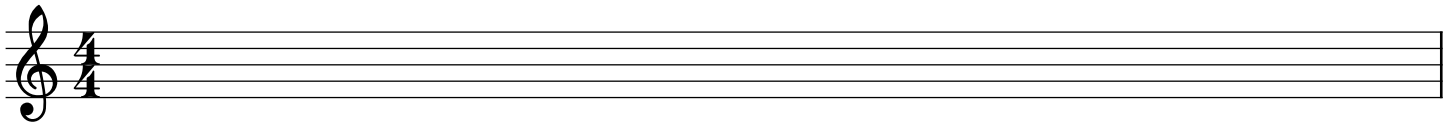
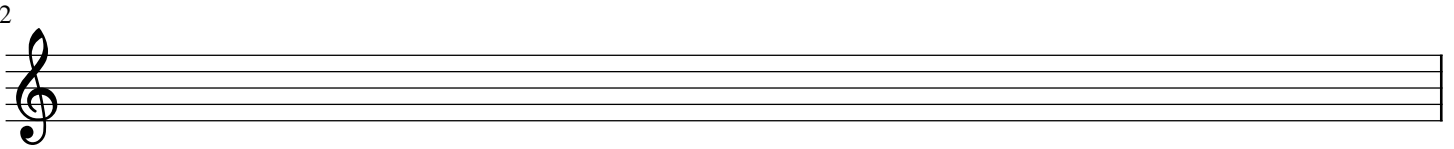


Write sharps (#) and flats (b)

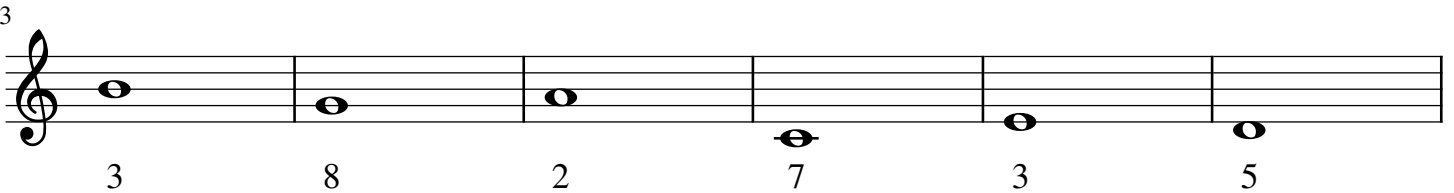
Write the next half notes with a sharp: Fa, do, sol, re, la, mi, si



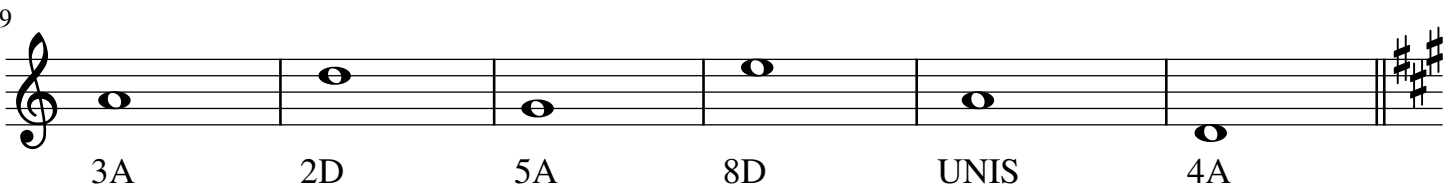
Write the next quarter notes with a flat: Si, mi, la, re, sol, do, fa



From these notes write an harmonic interval above the note



From these notes write a melodic interval



Circle in blue all the notes with a sharp, and circle in red all the notes with a flat



Name the next intervals:

Above write if they are melodic, o harmonic, and below the number of tones and semitones

